

JOHNSON COUNTY COMMISSIONERS COURT



APR 26 2021

Becky Ivey, County Clerk
Johnson County Texas

By md Deputy

MIKE WHITE
Commissioner Pct. #3

LARRY WOOLLEY
Commissioner Pct. #4

RICK BAILEY
Commissioner Pct. #1

ROGER HARMON
County Judge

KENNY HOWELL
Commissioner Pct. #2

PAULA REID
Assistant to Commissioner's Court

STATE OF TEXAS

§
§
§

COUNTY OF JOHNSON

ORDER #2021-24

ORDER APPROVING PLAT

WHEREAS, Chapter 232 of the Texas Local Government Code requires the owner of a tract of land located outside the limits of a municipality to have a plat of the subdivision prepared if the owner divides the tract of land into two or more parts to lay out: (1) a subdivision of the tract, including an addition; (2) lots; or (3) streets, alleys, squares, parks, or other parts of the tract intended to be dedicated to public use or for the use of purchasers or owners of lots fronting on or adjacent to the streets, alleys, squares, parks or other parts; and

WHEREAS, an application for a plat of a subdivision has been presented to the Public Works Department of Johnson County; and

WHEREAS, the application for the plat of the subdivision meets the requirements of Chapter 232 of the Texas Local Government Code and the requirements of the Subdivision Rules and Regulations of Johnson County, Texas as currently amended; and

WHEREAS, a motion was made by Commissioner Woolley, Pct. #4 and seconded by Commissioner Bailey, Pct. #1 that stated: "I make the motion to approve for filing purposes only, a Plat of **Goltz Addition**, Lot 1, Block 1, in Johnson County, Texas, Precinct #4 and clarify that the filing of the plat which dedicates roads and streets to the public **does not** make those roads and streets county roads subject to county maintenance."

Said motion was approved by a vote of the Commissioners Court on the 26th day of April, 2021.

NOW THEREFORE BE IT RESOLVED AND ORDERED:

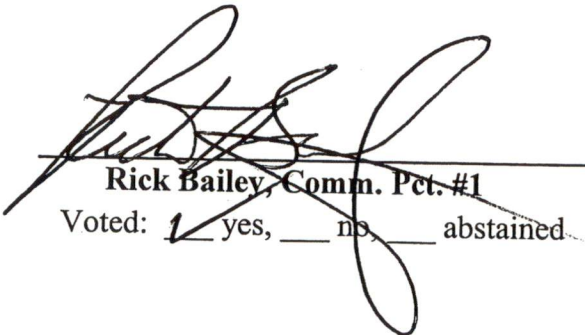
The Commissioners Court of Johnson County, Texas does hereby enter this order approving the Plat **Goltz Addition**, Lot 1, Block 1, in Johnson County, Texas, Precinct #4 for filing purposes only and clarifying that the filing of the plat which dedicates roads and streets to the public **does not** make those roads and streets county roads subject to county maintenance.

WITNESS OUR HAND THIS, THE 26th DAY OF APRIL, 2021.




Roger Harmon, Johnson County Judge

Voted: yes, ___ no, ___ abstained



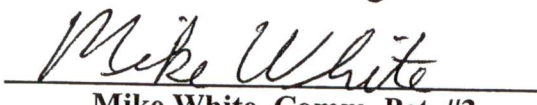
Rick Bailey, Comm. Pct. #1

Voted: yes, ___ no, ___ abstained



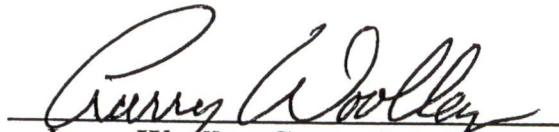
Kenny Howell, Comm. Pct. #2

Voted: yes, ___ no, ___ abstained



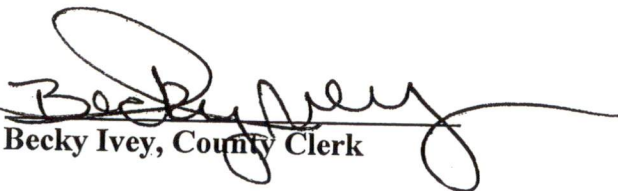
Mike White, Comm. Pct. #3

Voted: ___ yes, ___ no, ___ abstained



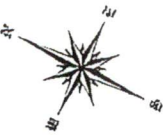
Larry Woolley, Comm. Pct. #4

Voted: yes, ___ no, ___ abstained

ATTEST: 

Becky Ivey, County Clerk





LEGEND

- MS 3/4" IRON PIPE SET IN A CAP
- MS 1/2" IRON PIPE SET IN A CAP
- (C-1) CONCRETE CURB
- (C-2) CONCRETE CURB
- (C-3) CONCRETE CURB
- (C-4) CONCRETE CURB
- (C-5) CONCRETE CURB
- (C-6) CONCRETE CURB
- (C-7) CONCRETE CURB
- (C-8) CONCRETE CURB
- (C-9) CONCRETE CURB
- (C-10) CONCRETE CURB
- (C-11) CONCRETE CURB
- (C-12) CONCRETE CURB
- (C-13) CONCRETE CURB
- (C-14) CONCRETE CURB
- (C-15) CONCRETE CURB
- (C-16) CONCRETE CURB
- (C-17) CONCRETE CURB
- (C-18) CONCRETE CURB
- (C-19) CONCRETE CURB
- (C-20) CONCRETE CURB
- (C-21) CONCRETE CURB
- (C-22) CONCRETE CURB
- (C-23) CONCRETE CURB
- (C-24) CONCRETE CURB
- (C-25) CONCRETE CURB
- (C-26) CONCRETE CURB
- (C-27) CONCRETE CURB
- (C-28) CONCRETE CURB
- (C-29) CONCRETE CURB
- (C-30) CONCRETE CURB
- (C-31) CONCRETE CURB
- (C-32) CONCRETE CURB
- (C-33) CONCRETE CURB
- (C-34) CONCRETE CURB
- (C-35) CONCRETE CURB
- (C-36) CONCRETE CURB
- (C-37) CONCRETE CURB
- (C-38) CONCRETE CURB
- (C-39) CONCRETE CURB
- (C-40) CONCRETE CURB
- (C-41) CONCRETE CURB
- (C-42) CONCRETE CURB
- (C-43) CONCRETE CURB
- (C-44) CONCRETE CURB
- (C-45) CONCRETE CURB
- (C-46) CONCRETE CURB
- (C-47) CONCRETE CURB
- (C-48) CONCRETE CURB
- (C-49) CONCRETE CURB
- (C-50) CONCRETE CURB
- (C-51) CONCRETE CURB
- (C-52) CONCRETE CURB
- (C-53) CONCRETE CURB
- (C-54) CONCRETE CURB
- (C-55) CONCRETE CURB
- (C-56) CONCRETE CURB
- (C-57) CONCRETE CURB
- (C-58) CONCRETE CURB
- (C-59) CONCRETE CURB
- (C-60) CONCRETE CURB
- (C-61) CONCRETE CURB
- (C-62) CONCRETE CURB
- (C-63) CONCRETE CURB
- (C-64) CONCRETE CURB
- (C-65) CONCRETE CURB
- (C-66) CONCRETE CURB
- (C-67) CONCRETE CURB
- (C-68) CONCRETE CURB
- (C-69) CONCRETE CURB
- (C-70) CONCRETE CURB
- (C-71) CONCRETE CURB
- (C-72) CONCRETE CURB
- (C-73) CONCRETE CURB
- (C-74) CONCRETE CURB
- (C-75) CONCRETE CURB
- (C-76) CONCRETE CURB
- (C-77) CONCRETE CURB
- (C-78) CONCRETE CURB
- (C-79) CONCRETE CURB
- (C-80) CONCRETE CURB
- (C-81) CONCRETE CURB
- (C-82) CONCRETE CURB
- (C-83) CONCRETE CURB
- (C-84) CONCRETE CURB
- (C-85) CONCRETE CURB
- (C-86) CONCRETE CURB
- (C-87) CONCRETE CURB
- (C-88) CONCRETE CURB
- (C-89) CONCRETE CURB
- (C-90) CONCRETE CURB
- (C-91) CONCRETE CURB
- (C-92) CONCRETE CURB
- (C-93) CONCRETE CURB
- (C-94) CONCRETE CURB
- (C-95) CONCRETE CURB
- (C-96) CONCRETE CURB
- (C-97) CONCRETE CURB
- (C-98) CONCRETE CURB
- (C-99) CONCRETE CURB
- (C-100) CONCRETE CURB

NOTICE TO BUYERS

1. THE BUYER OF ANY LOT IN THIS BLOCK SHALL BE DEEMED TO HAVE ACCEPTED THE SAME WITH ALL THE IMPROVEMENTS AND UTILITIES SHOWN ON THIS PLAN AND TO HAVE AGREED TO MAINTAIN AND REPAIR THE SAME AT ALL TIMES.

2. THE BUYER OF ANY LOT IN THIS BLOCK SHALL BE DEEMED TO HAVE AGREED TO MAINTAIN AND REPAIR THE SAME AT ALL TIMES.

3. THE BUYER OF ANY LOT IN THIS BLOCK SHALL BE DEEMED TO HAVE AGREED TO MAINTAIN AND REPAIR THE SAME AT ALL TIMES.

4. THE BUYER OF ANY LOT IN THIS BLOCK SHALL BE DEEMED TO HAVE AGREED TO MAINTAIN AND REPAIR THE SAME AT ALL TIMES.

5. THE BUYER OF ANY LOT IN THIS BLOCK SHALL BE DEEMED TO HAVE AGREED TO MAINTAIN AND REPAIR THE SAME AT ALL TIMES.

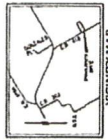
6. THE BUYER OF ANY LOT IN THIS BLOCK SHALL BE DEEMED TO HAVE AGREED TO MAINTAIN AND REPAIR THE SAME AT ALL TIMES.

7. THE BUYER OF ANY LOT IN THIS BLOCK SHALL BE DEEMED TO HAVE AGREED TO MAINTAIN AND REPAIR THE SAME AT ALL TIMES.

8. THE BUYER OF ANY LOT IN THIS BLOCK SHALL BE DEEMED TO HAVE AGREED TO MAINTAIN AND REPAIR THE SAME AT ALL TIMES.

9. THE BUYER OF ANY LOT IN THIS BLOCK SHALL BE DEEMED TO HAVE AGREED TO MAINTAIN AND REPAIR THE SAME AT ALL TIMES.

10. THE BUYER OF ANY LOT IN THIS BLOCK SHALL BE DEEMED TO HAVE AGREED TO MAINTAIN AND REPAIR THE SAME AT ALL TIMES.



VICINITY MAP

APPROVED BY JOHNSON COUNTY COMMISSIONERS

DATE OF APPROVAL: _____

COUNTY CLERK: _____

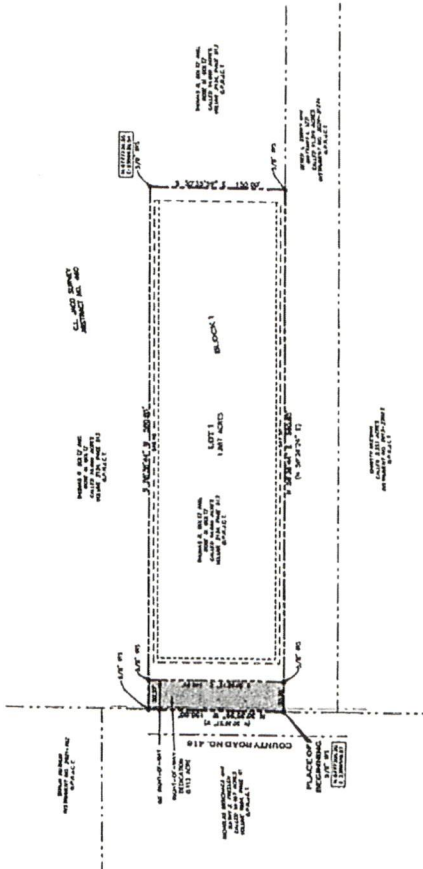
COUNTY JUDGE: _____

THIS RECORD IS _____

DATE: _____

COUNTY CLERK: _____

COUNTY JUDGE: _____



NOTICE TO BUYERS

1. THE BUYER OF ANY LOT IN THIS BLOCK SHALL BE DEEMED TO HAVE ACCEPTED THE SAME WITH ALL THE IMPROVEMENTS AND UTILITIES SHOWN ON THIS PLAN AND TO HAVE AGREED TO MAINTAIN AND REPAIR THE SAME AT ALL TIMES.

2. THE BUYER OF ANY LOT IN THIS BLOCK SHALL BE DEEMED TO HAVE AGREED TO MAINTAIN AND REPAIR THE SAME AT ALL TIMES.

3. THE BUYER OF ANY LOT IN THIS BLOCK SHALL BE DEEMED TO HAVE AGREED TO MAINTAIN AND REPAIR THE SAME AT ALL TIMES.

4. THE BUYER OF ANY LOT IN THIS BLOCK SHALL BE DEEMED TO HAVE AGREED TO MAINTAIN AND REPAIR THE SAME AT ALL TIMES.

5. THE BUYER OF ANY LOT IN THIS BLOCK SHALL BE DEEMED TO HAVE AGREED TO MAINTAIN AND REPAIR THE SAME AT ALL TIMES.

6. THE BUYER OF ANY LOT IN THIS BLOCK SHALL BE DEEMED TO HAVE AGREED TO MAINTAIN AND REPAIR THE SAME AT ALL TIMES.

7. THE BUYER OF ANY LOT IN THIS BLOCK SHALL BE DEEMED TO HAVE AGREED TO MAINTAIN AND REPAIR THE SAME AT ALL TIMES.

8. THE BUYER OF ANY LOT IN THIS BLOCK SHALL BE DEEMED TO HAVE AGREED TO MAINTAIN AND REPAIR THE SAME AT ALL TIMES.

9. THE BUYER OF ANY LOT IN THIS BLOCK SHALL BE DEEMED TO HAVE AGREED TO MAINTAIN AND REPAIR THE SAME AT ALL TIMES.

10. THE BUYER OF ANY LOT IN THIS BLOCK SHALL BE DEEMED TO HAVE AGREED TO MAINTAIN AND REPAIR THE SAME AT ALL TIMES.

FINAL PLAT SHOWING

LOT 1, BLOCK 1
GOLTZ ADDITION
AN ADDITION TO JOHNSON COUNTY, TEXAS.
 BEING 2.00 ACRES OF LAND LOCATED IN THE CLJACO SURVEY, ABSTRACT NO. 480, JOHNSON COUNTY, TEXAS.

NOTICE TO BUYERS

1. THE BUYER OF ANY LOT IN THIS BLOCK SHALL BE DEEMED TO HAVE ACCEPTED THE SAME WITH ALL THE IMPROVEMENTS AND UTILITIES SHOWN ON THIS PLAN AND TO HAVE AGREED TO MAINTAIN AND REPAIR THE SAME AT ALL TIMES.

2. THE BUYER OF ANY LOT IN THIS BLOCK SHALL BE DEEMED TO HAVE AGREED TO MAINTAIN AND REPAIR THE SAME AT ALL TIMES.

3. THE BUYER OF ANY LOT IN THIS BLOCK SHALL BE DEEMED TO HAVE AGREED TO MAINTAIN AND REPAIR THE SAME AT ALL TIMES.

4. THE BUYER OF ANY LOT IN THIS BLOCK SHALL BE DEEMED TO HAVE AGREED TO MAINTAIN AND REPAIR THE SAME AT ALL TIMES.

5. THE BUYER OF ANY LOT IN THIS BLOCK SHALL BE DEEMED TO HAVE AGREED TO MAINTAIN AND REPAIR THE SAME AT ALL TIMES.

6. THE BUYER OF ANY LOT IN THIS BLOCK SHALL BE DEEMED TO HAVE AGREED TO MAINTAIN AND REPAIR THE SAME AT ALL TIMES.

7. THE BUYER OF ANY LOT IN THIS BLOCK SHALL BE DEEMED TO HAVE AGREED TO MAINTAIN AND REPAIR THE SAME AT ALL TIMES.

8. THE BUYER OF ANY LOT IN THIS BLOCK SHALL BE DEEMED TO HAVE AGREED TO MAINTAIN AND REPAIR THE SAME AT ALL TIMES.

9. THE BUYER OF ANY LOT IN THIS BLOCK SHALL BE DEEMED TO HAVE AGREED TO MAINTAIN AND REPAIR THE SAME AT ALL TIMES.

10. THE BUYER OF ANY LOT IN THIS BLOCK SHALL BE DEEMED TO HAVE AGREED TO MAINTAIN AND REPAIR THE SAME AT ALL TIMES.



RECORDED IN BOOK _____ PAGE _____

DATE OF RECORDING: _____

COUNTY CLERK: _____

COUNTY JUDGE: _____